

Susan Eley Fine Art Is Pleased To Announce the Opening of

Shaping Space: The Dance of the Silhouette

On View: February 8 - March 22, 2007

Opening Reception: Thursday, February 8, 5-9 p.m.

Hours: Mon.-Thurs., 11 a.m.- 2 p.m. and by appointment

With paintings by Silvina Mamani and Daehyuk Sim and silver gelatin photographs by Heather Boose Weiss, *Shaping Space: The Dance of the Silhouette* examines the various ways in which artists treat the figure. The exhibition features Mamani's loose, sculptural forms, Sim's refined silhouettes and Boose Weiss's mysteriously romantic self-portraits. Despite very different techniques and styles, the artists share a reverence for the human form and an interest in how people behave and move in particular landscapes.

Argentine artist **Silvina Mamani** paints figures, solo or in groups, in repose, playing or dancing to an unsung musical score. Trained as a sculptor, Mamani carves the figures—equally beloved by her in their various shapes and sizes—out of two-dimensional settings. For Mamani, peoples' shapes do not define their beauty; it is whether they move through space, and ultimately through their lives, with conviction and integrity that is of greater import.

In his small oil paintings, South Korean artist **Daehyuk Sim** renders skin tone, musculature and female curves with near scientific precision. Through his masterful use of the oil medium, he imbues his jewel-like scenes of stillness and quiet with a painterly, diaphanous quality. Sim finds beauty in the ordinary forms of his family and friends. For him, there is no more perfect machine than the human figure.

Heather Boose Weiss photographs herself in landscapes she encounters and examines her reaction to each new setting. For Weiss, identity is not solid or fixed, but shifts with the ever-changing environments we find ourselves in. Weiss chooses the photographic medium of black and white for its reductive qualities, which allow her to distill the initial interaction between human and landscape. The artist depicts herself nude or cloaked in simple, sheer fabrics to make a bolder universal statement.

Susan Eley
Fine Art

Silvina Mamani



En Movimiento, 2005
Acrylic and charcoal on wallpaper
6 ¼ x 13 inches



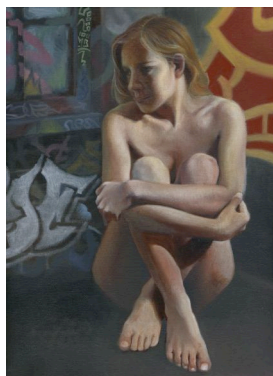
Resting in Blue, 2006
Acrylic and charcoal on wallpaper
22 x 38 inches



Fiesta, 2006
Acrylic and charcoal on wallpaper
25 x 56 1/2 inches

Susan Eley
Fine Art

Daehyuk Sim



Sanctuary, 2006
Oil on canvas
12 x 9 inches



Red Velvet, 2006
oil on linen
24 x 18 inches



White Room, 2006
oil on linen
20 x 26 inches

Susan Eley

Fine Art

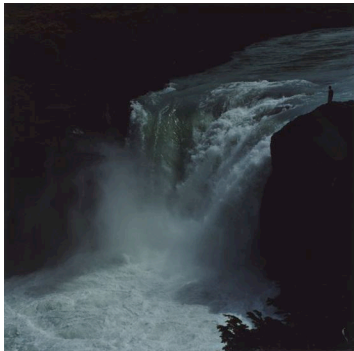
Heather Boose Weiss



Ushuaia, 2003
Silver gelatin print
18 x 18 inches



Water Sifter, 2003
Silver gelatin print
18 x 18 inches



What's the Rush?, 2003
Chromogenic print
30 x 30 inches